

# Pressacavi metallici per zone pericolose

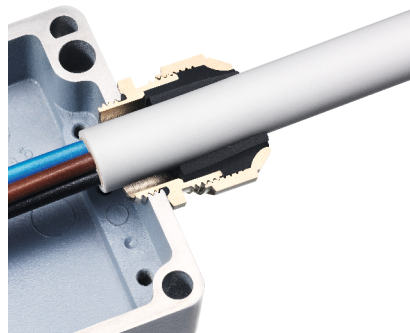
## Metallic cable glands for hazardous locations



### Impiego - Use

Linea di pressacavi metallici in ottone nichelato costituiti da una guarnizione a doppio elemento che permette un ampio range di accoppiamento. Sono caratterizzati da un grado di protezione IP 68 e sono adatti all'impiego in zone a pericolo di esplosione secondo il NFPA 70 (NEC). Questi pressacavi sono certificati in accordo alla norma EN 45545-2 per applicazioni in ambito ferroviario.

*Nickel plated brass cable glands made by a double layer seals to allow a wide range of diameters. They are IP 68 protection class and suitable for use in hazardous location according to NFPA 70 (NEC). These cable glands are certified for rail applications according to EN 45545-2.*



### Dati tecnici - Technical data

Caratteristica - Characteristics	Valore/proprietà - Value/property
Materiale <i>Material</i>	Ottone nichelato o Acciaio inossidabile AISI 316 <i>Nickel-plated brass or AISI 316 Stainless Steel</i>
Materiale della guarnizione <i>Sealing ring material</i>	NBR, elemento doppio <i>NBR, two-piece.</i>
Temperatura di esercizio <i>Temperature range</i>	-45°C, +105°C
Grado di protezione <i>Protection class</i>	IP 68, NEMA 4X
Riferimenti normativi di impiego <i>Standards of use</i>	EN 45545-2 HL1, HL2, HL3, R22, R23 UL/CSA approvals: NEMA 250, UL 514B, CSA C22.2; NFPA 70 (NEC) Art. 501.10 (B) (2) Class I Div. 2, Art. 502.10 (A) (2) and (B) (2) Class II, Div. 1 and 2, Art. 503.10 (A) (3) Class III Div. 1 and 2

### Codifiche e dimensioni - Coding and dimensions

#### Pressacavo diritto - Straight cable gland

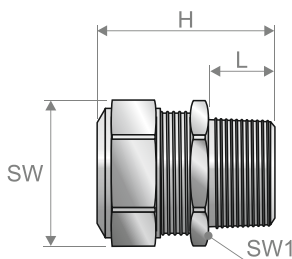


Fig. 1  
Versione metrica  
*Metric version*

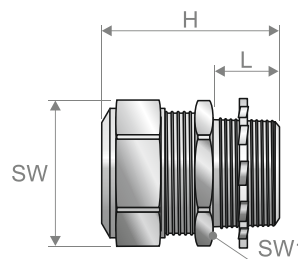


Fig. 2  
Versione NPT  
*NPT version*

Codice <i>Code</i>	Versione <i>Version</i>	Filetto <i>Thread</i>	Numero di elementi della guarnizione <i>Number of pieces of sealing ring</i>	Chiave di serraggio <i>Tightening key [mm]</i>		Diametro del cavo <i>Cable diameter Min/Max [mm]</i>	Dimensioni <i>Sizes [mm]</i>		Confezione <i>Packaging [pz]</i>	Nota <i>Note</i>
				SW	SW1		H	L		
AN736.716.1	NPB	M16x1,5	2	17	18	4,0÷6,5÷8,5	32	10	10	(1)
AN736.717.1	NPB	M20x1,5	2	17	22	4,0÷6,5÷8,5	32	10	10	(2)
AN736.720.1	NPB	M20x1,5	2	22	22	6,0÷9,0÷12,0	35	10	10	(2)
AN736.722.1	NPB	M25x1,5	2	22	27	6,0÷9,0÷12,0	36	10	5	(2)
AN736.725.1	NPB	M25x1,5	2	27	27	10,5÷14,0÷17,0	38	10	5	(2)

# RACCORDI E SISTEMI PASSACAVO - FITTINGS AND CABLE ENTRY SYSTEMS

Codice Code	Versione Version	Filetto Thread	Numero di elementi della guarnizione Number of pieces of sealing ring	Chiave di serraggio Tightening key [mm]		Diametro del cavo Cable diameter Min/Med <sup>®</sup> /Max [mm]	Dimensioni Sizes [mm]		Confezione Packaging [pz]	Nota Note
				SW	SW1		H	L		
AN736.728.1	NPB	M32x1,5	2	27	35	10,5÷14,0÷17,0	40	12	5	(2)
AN736.732.1	NPB	M32x1,5	2	35	35	15,5÷20,0÷24,0	42	12	5	(2)
AN736.735.1	NPB	M40x1,5	2	35	43	15,5÷20,0÷24,0	43	13	2	(2)
AN736.740.1	NPB	M40x1,5	2	43	43	22,0÷27,0÷31,0	45	13	2	(2)
AN736.745.1	NPB	M50x1,5	2	43	55	22,0÷27,0÷31,0	46	14	2	(2)
AN736.750.1	NPB	M50x1,5	2	53	55	29,5÷35,0÷40,0	50	14	2	(2)
AN738.712.2	NPB	NPT 1/2"	2	17	24	4,0÷6,5÷8,5	36	14	10	(2)
AN738.716.2	NPB	NPT 1/2"	2	22	24	6,0÷9,0÷12,0	39	14	10	(2)
AN738.718.2	NPB	NPT 3/4"	2	22	30	6,0÷9,0÷12,0	40	14	5	(2)
AN738.720.2	NPB	NPT 3/4"	2	27	30	10,5÷14,0÷17,0	42	14	5	(2)
AN738.723.2	NPB	NPT 1"	2	27	38	10,5÷14,0÷17,0	44	16	5	(2)
AN738.726.2	NPB	NPT 1"	2	35	38	15,5÷20,0÷24,0	46	16	5	(2)
AN738.730.2	NPB	NPT 1 1/4"	2	35	48	15,5÷20,0÷24,0	46	16	2	(2)
AN738.735.2	NPB	NPT 1 1/4"	2	43	48	22,0÷27,0÷31,0	48	16	2	(2)
AN738.738.2	NPB	NPT 1 1/2"	2	43	55	22,0÷27,0÷31,0	50	18	2	(2)
AN738.740.2	NPB	NPT 1 1/2"	2	53	55	29,5÷35,0÷40,0	64	18	2	(2)
AN736.716.9	SS	M16x1,5	2	17	18	4,0÷6,5÷8,5	32	10	10	(1)
AN736.717.9	SS	M20x1,5	2	17	22	4,0÷6,5÷8,5	32	10	10	(2)
AN736.720.9	SS	M20x1,5	2	22	22	6,0÷9,0÷12,0	35	10	10	(2)
AN736.722.9	SS	M25x1,5	2	22	27	6,0÷9,0÷12,0	36	10	5	(2)
AN736.725.9	SS	M25x1,5	2	27	27	10,5÷14,0÷17,0	38	10	5	(2)
AN736.728.9	SS	M32x1,5	2	27	35	10,5÷14,0÷17,0	40	12	5	(2)
AN736.732.9	SS	M32x1,5	2	35	35	15,5÷20,0÷24,0	42	12	5	(2)
AN736.735.9	SS	M40x1,5	2	35	43	15,5÷20,0÷24,0	43	13	2	(2)
AN736.740.9	SS	M40x1,5	2	43	43	22,0÷27,0÷31,0	45	13	2	(2)
AN736.745.9	SS	M50x1,5	2	43	55	22,0÷27,0÷31,0	46	14	2	(2)
AN736.750.9	SS	M50x1,5	2	53	55	29,5÷35,0÷40,0	50	14	2	(2)
AN738.712.92	SS	NPT 1/2"	2	17	24	4,0÷6,5÷8,5	36	14	10	(2)
AN738.716.92	SS	NPT 1/2"	2	22	24	6,0÷9,0÷12,0	39	14	10	(2)
AN738.718.92	SS	NPT 3/4"	2	22	30	6,0÷9,0÷12,0	40	14	5	(2)
AN738.720.92	SS	NPT 3/4"	2	27	30	10,5÷14,0÷17,0	42	14	5	(2)
AN738.723.92	SS	NPT 1"	2	27	38	10,5÷14,0÷17,0	44	16	5	(2)
AN738.726.92	SS	NPT 1"	2	35	38	15,5÷20,0÷24,0	46	16	5	(2)
AN738.730.92	SS	NPT 1 1/4"	2	35	48	15,5÷20,0÷24,0	46	16	2	(2)
AN738.735.92	SS	NPT 1 1/4"	2	43	48	22,0÷27,0÷31,0	48	16	2	(2)
AN738.738.92	SS	NPT 1 1/2"	2	43	55	22,0÷27,0÷31,0	50	18	2	(2)
AN738.740.92	SS	NPT 1 1/2"	2	53	55	29,5÷35,0÷40,0	64	18	2	(2)

(1) Certificato (UL) Recognized e CSA. / (UL) Recognized and CSA certified.

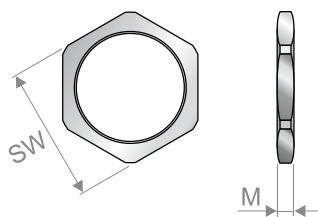
(2) Certificato (UL) Listed e CSA. / (UL) Listed and CSA certified.

(3) Valore intermedio di passaggio ad un solo elemento di guarnizione. / Intermediate value of passage to a single sealing ring.

Legenda materiali: SS = Acciaio inossidabile, NPB = Ottone nichelato

Materials' description: SS = Stainless steel, NPB = Nickel-plated brass

## Ghiera sottile - Thin lock nut



Codice Code	Filetto Thread	Chiave di serraggio Tightening key [mm] SW	Dimensioni Sizes [mm] M	Confezione Packaging [pz]
PCFM10_M016	M16x1,5	19	3,0	100
PCFM10_M020	M20x1,5	24	3,5	100
PCFM10_M025	M25x1,5	30	4,0	50
PCFM10_M032	M32x1,5	36	4,0	25
PCFM10_M040	M40x1,5	46	5,0	25
PCFM10_M050	M50x1,5	55	5,5	10